

## Audrey A (WD) Asset Data Sheet



CEU-DCM-SNS0096-DST-0005 Rev C1

<b>Installed:</b>	1987
<b>First Gas:</b>	1988
<b>Cessation of Production:</b>	May 2016
<b>Location:</b>	The Audrey A (WD) Platform wells are shut in and located in the UK sector (block 48/11a) at 53.539635° N 02.014384° E in the southern North Sea, approximately 17km North of the LOGGS complex and is tied back to the LOGGS complex. See Figure 1.
<b>Gas Reservoir:</b>	Upper Leman Sandstone Formation of the Lower Permian Rotliegend Group, Top of Reservoir 8,600ft.
<b>Well:</b>	Ten platform wells; 49/11a-A1, A2, A3, A4, A5, A6, A7, A8, A9 & A10. Water depth ~27m
<b>Subsea Well</b>	One subsea well with its own wellhead protection structure, 11a-7 tied back to Audrey A (WD). The well is abandoned.
<b>Pipeline:</b>	PL496 – 20”x 16.89km Gas export pipeline from Audrey A (WD) to LOGGS PP; PL497 – 3” x 16.96km Methanol pipeline (piggy-backed to PL496) from LOGGS PP to Audrey A (WD); PL575 – 8” x 492m Gas export pipeline from Audrey 11a-7 to Audrey A (WD); PL576 – 4” x 650m Umbilical line containing of hydraulic hoses and electrical cables.
<b>Control:</b>	“Line of Sight” control from LOGGS complex.
<b>Installation:</b>	1 x Platform, Normally Unattended Installation; Weight, topsides: 1,276Te Weight, jacket: 1,063Te (excl. piles) Weight, piles: 104Te each (x4)
<b>Subsea Installation</b>	1 x Wellhead Protection Structure, secured with 4 x piles; Weight, 34.62Te (excluding 14.89Te for 4 x piles)

# Audrey A (WD) Asset Data Sheet

CEU-DCM-SNS0096-DST-0005 Rev C1

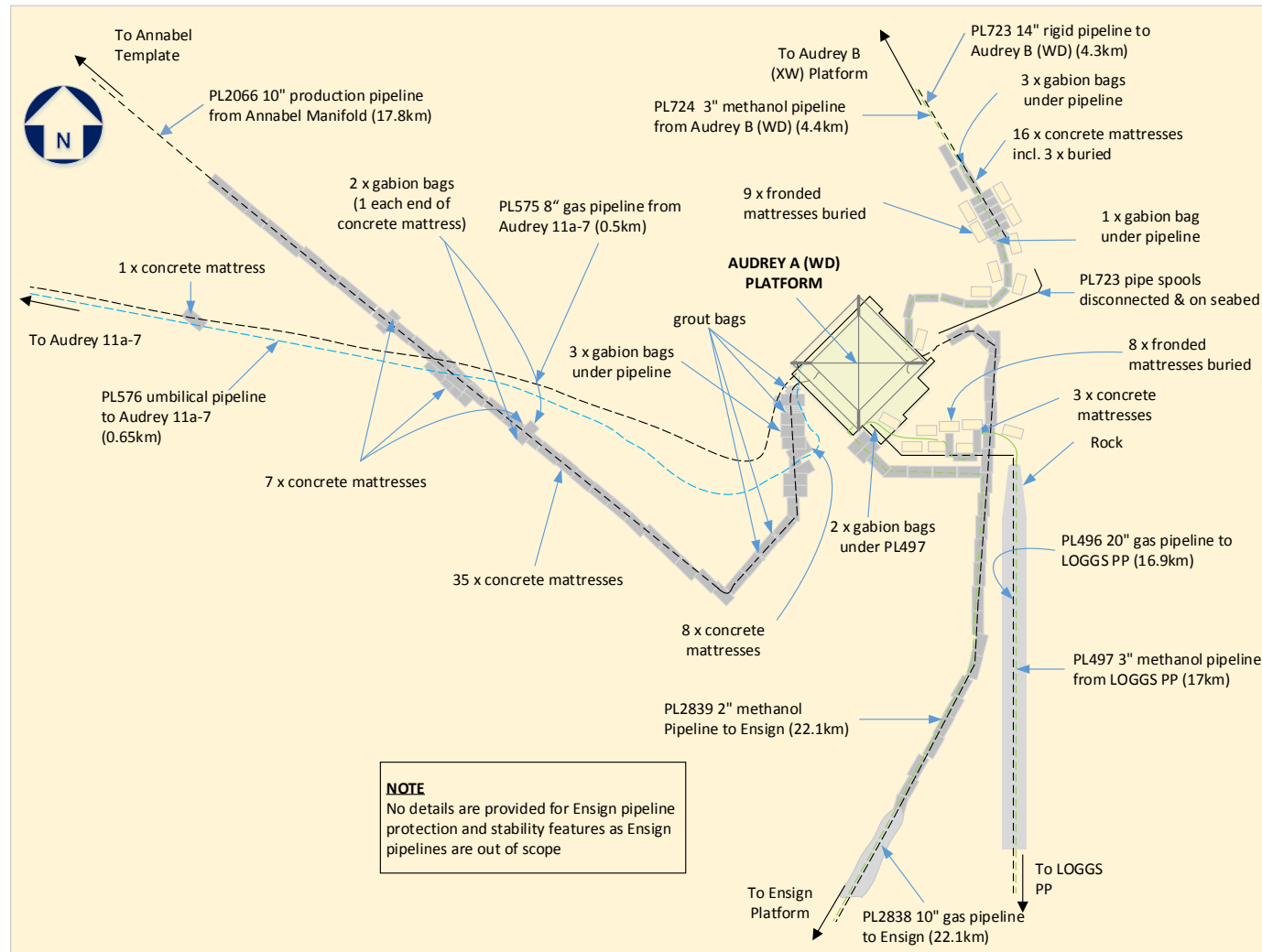


Figure 1: Audrey A (WD) Approaches

# Audrey A (WD) Asset Data Sheet

CEU-DCM-SNS0096-DST-0005 Rev C1

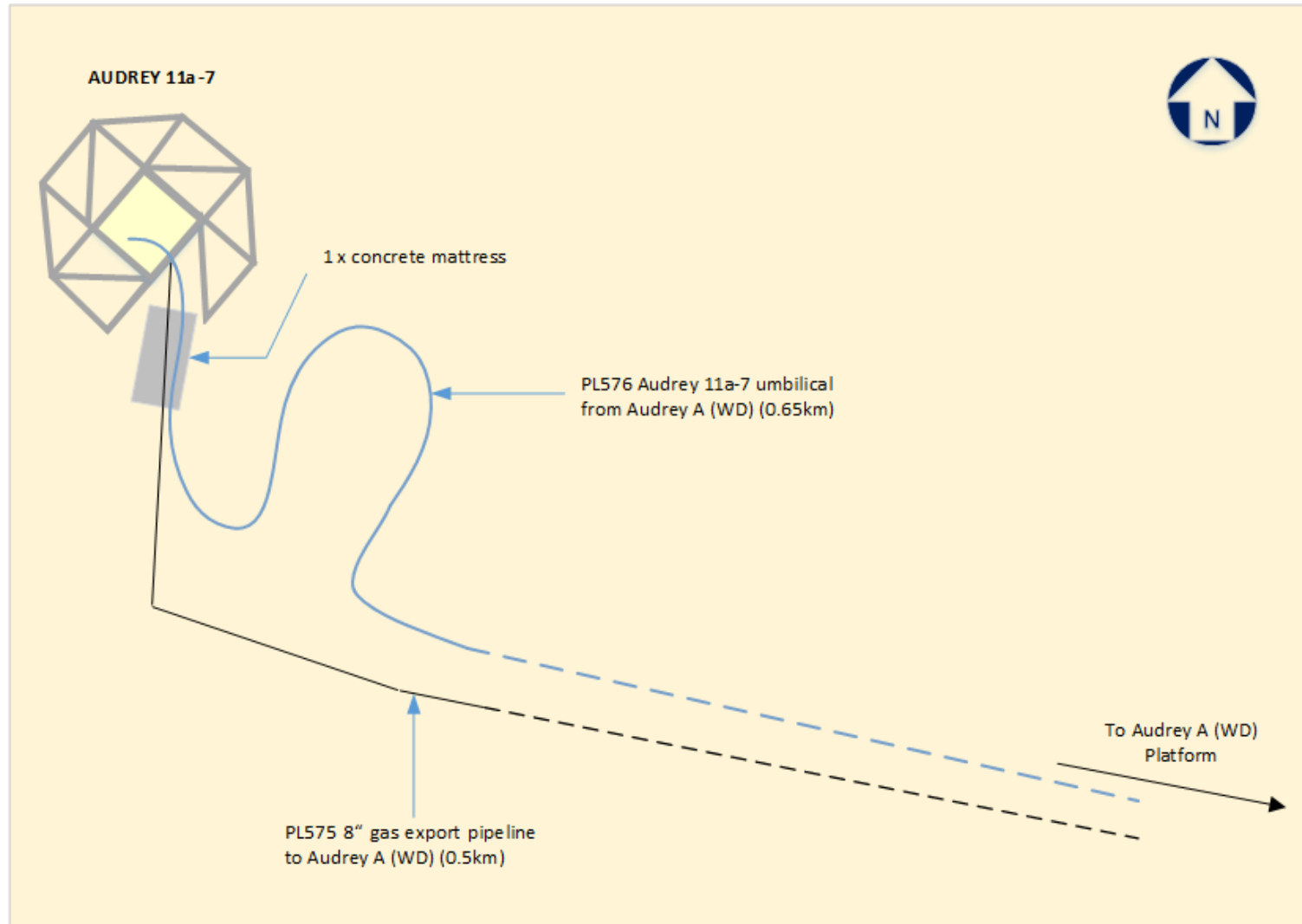


Figure 2: Audrey 11a-7 Approaches